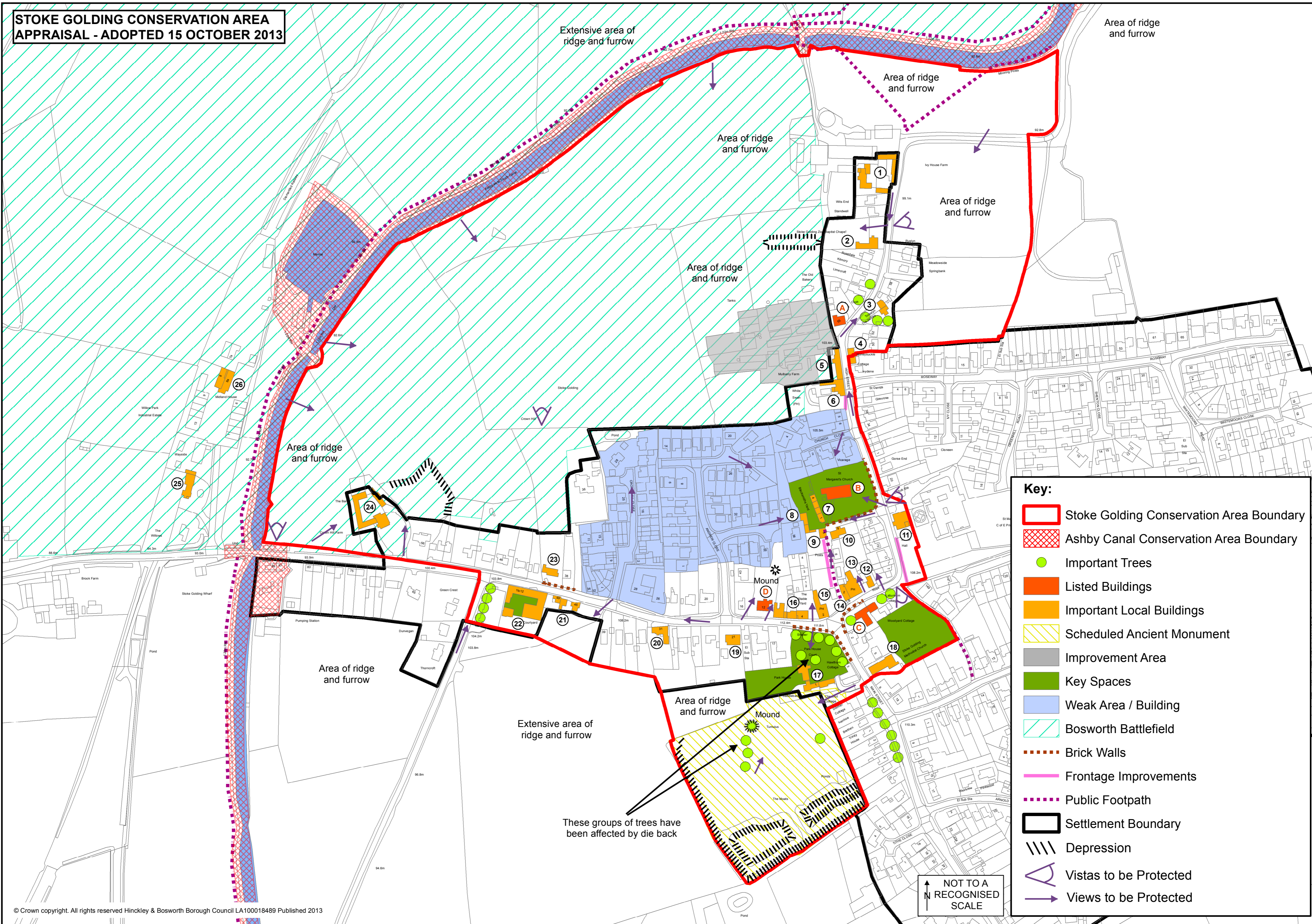


**STOKE GOLDING CONSERVATION AREA
APPRAISAL - ADOPTED 15 OCTOBER 2013**



Key:

- Stoke Golding Conservation Area Boundary
- Ashby Canal Conservation Area Boundary
- Important Trees
- Listed Buildings
- Important Local Buildings
- Scheduled Ancient Monument
- Improvement Area
- Key Spaces
- Weak Area / Building
- Bosworth Battlefield
- Brick Walls
- Frontage Improvements
- Public Footpath
- Settlement Boundary
- Depression
- ∇ Vistas to be Protected
- ↗ Views to be Protected

NOT TO A
RECOGNISED
SCALE